

# TIMSBURY VILLAGE REPORT & ACTION PLAN



With thanks for financial support from



Wiltshire - Bath & North East Somerset - North Somerset - South Gloucestershire

December **2009**

# Contents

## Management of survey

Summary, Steering Committee and Working Group members, acknowledgements	3
The Parish of Timsbury	4-5
<b><i>Context of the Report</i></b>	
Background, process of construction and methods of consultation	6
<b><i>Data Analysis &amp; Validity of the Findings</i></b>	
Number of questionnaires distributed, completed and returned and age profile of respondents	7
Length of residency of respondents in Timsbury	8

## Main results of survey

<b><i>Safer Communities</i></b>	
Policing, car ownership, parking, traffic, roads and pavements, street lighting, public transport, public footpaths	9-10
<b><i>Stronger Communities</i></b>	
Volunteering, village day, communication, community facilities, churches, parish precept, cemetery, allotments, housing, green belt land	11-13
<b><i>Healthier and Older Communities</i></b>	
Surgery, pharmacy, activities, older residents	14
<b><i>Children &amp; Young People</i></b>	
Education, activities, consultation with primary school pupils and 11-18 year olds, youth club	15-17
<b><i>Economic Development and Enterprise</i></b>	
Businesses, employment, travel to work, opportunities and concerns	18
<b><i>Environmental Sustainability and Climate Change</i></b>	
Energy, food, recycling, sustainability	19
<b><i>Action Plan and Implementation</i></b>	20-22
<b><i>The Essence of Timsbury and a Vision for the future</i></b>	23
<b><i>Comments</i></b>	24

# Timsbury Village Plan

## Summary

Timsbury is a village in Somerset about 8 miles south-west of Bath. In 2007 the Parish Council decided it would be valuable to have a "Village Plan" which reflected the opinions of residents about the village at the present time and indicated what developments they might wish to see in the future. A Steering Committee was set up which established working groups, and together they organised a survey of residents' opinions. *This document* presents a summary of the results of the survey and sets out a plan for action. It is intended for all residents of the village and especially for the Parish Council. The response rate to the questionnaire was excellent and it is reasonable to conclude that the results are a good indication of the views of the village as a whole.

Anyone investigating any of the topics further should refer to the full analysis of the replies to the questionnaires which can be found in the Primary Analysis of the Responses (which occupies 180 pages). The information available can be further enhanced by a secondary analysis by age, gender, post-code etc. using the raw data available on an Excel spreadsheet. Copies of these documents and further information can be obtained from the village website **www.timsbury.net** and the Clerk to the Parish Council.

## Steering Committee

Chairman	Geoff Smith
Secretary	Joyce Poulton
Treasurer	Delia Sewell
Christobel Boulton, Peter Buchanan, David Corsie, Veronica Packham, Val Peters	

## Working Group members

Services:	David Packham, Mandy Stonier, Sue Walker
Village Life:	Joyce Evry, Jacqui Grainger, Veronica Hoskins, John Moody
Roads & Transport:	Will Hull, Sue Langdon, Sheila Matthews, Chris Skinner

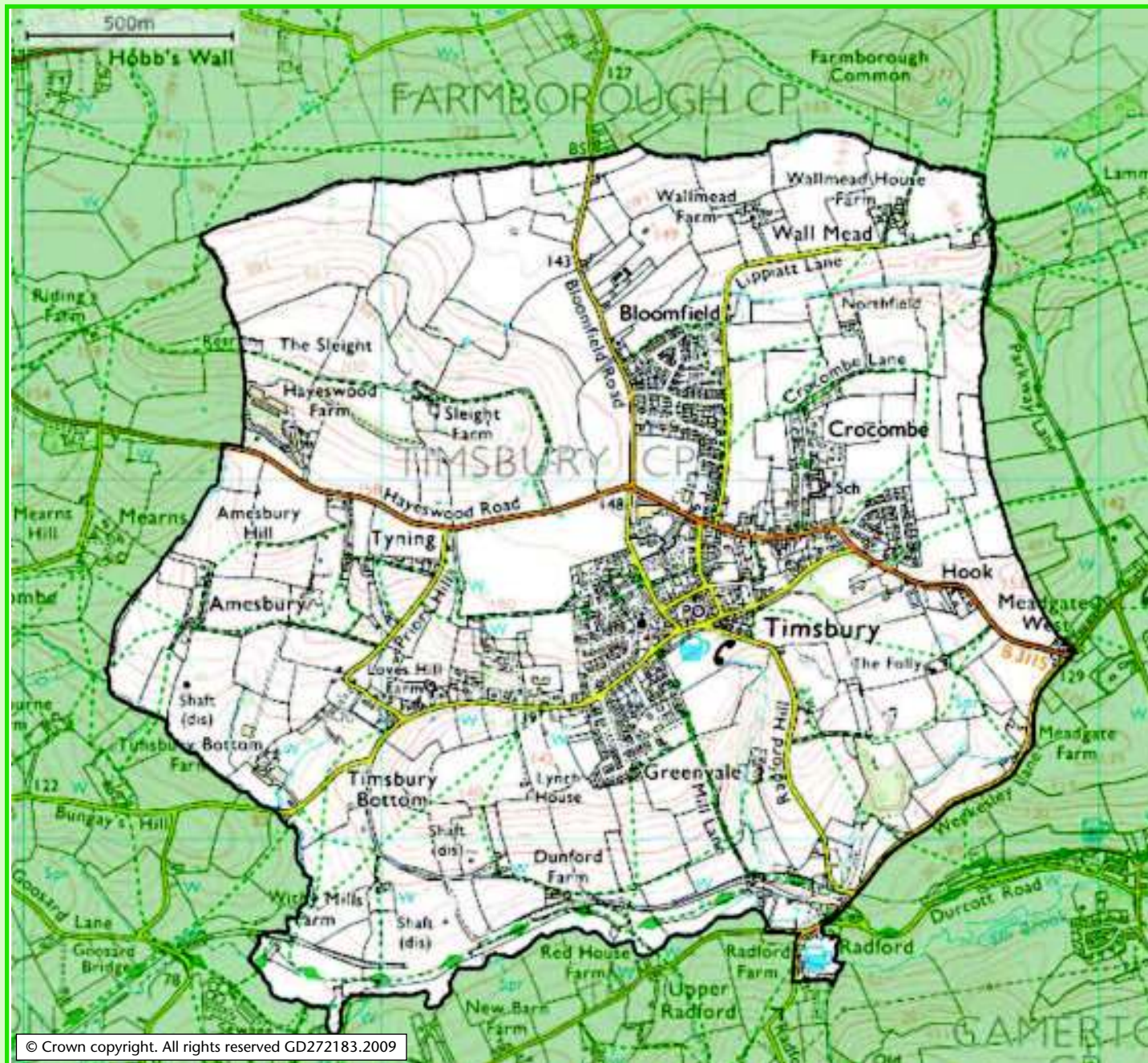
## Acknowledgements

Thanks are due to the following for co-operation and help in the completion of this project:

- Quartet and Community Action for providing finance and Jacqui Ward for advice.
- Timsbury Parish Council for providing finance and support.
- Policy & Partnerships Department, B&NES Council.
- Volunteers who delivered and collected questionnaires and distributed this report.
- Volunteers who spent many hours typing data from questionnaires into computer system.
- B&NES Council for use of their software to analyse data.
- Sanjeev Pun for use of the Post Office as a collection point for completed questionnaires.
- St. Mary's Primary School, Timsbury for project with children about the village of Timsbury.
- Rod Watts for facilitating links and use of the village web site.
- District Councillor Doug Deacon.
- The 1,000 and more residents who completed the questionnaire and responded to consultations.

Maps produced by kind permission of **Ordnance Survey and ONS Geography Customer Services**.  
Photos by **Tony Poulton** and **Geoff Smith** Press correspondent - **Malcolm Tucker**

# The Parish of Timsbury



*Map showing Timsbury Parish (and Surrounds)*

In 2009 Timsbury had an adult population of just over 2,000 with about 1,200 dwellings. The village is surrounded by attractive countryside and is within easy reach of Midsomer Norton, Radstock, Keynsham, Bath and Bristol. There are three routes into the village by main roads, with cars being the main form of transport. Very limited bus services are in operation. Many people who live in Timsbury work in other places, so transport is an important issue.

# The Parish of Timsbury

The parish records date back to the 11th Century. In the 19th Century the opening of the coal mines promoted significant development. This history is still in evidence for those who know where to look, but the last mine closed many years ago and the village has become a popular, clean and desirable location. There are many clubs and societies and a cricket team that was in the village final at Lords in 2007. Timsbury has regularly entered the Calor Village of the Year Competition with very good results.

Timsbury has a surgery, post office, pharmacy and primary school as well as four churches, two public houses, two general convenience stores, a garage, two hairdressers and several other small businesses. There is also a small industrial workshop estate.

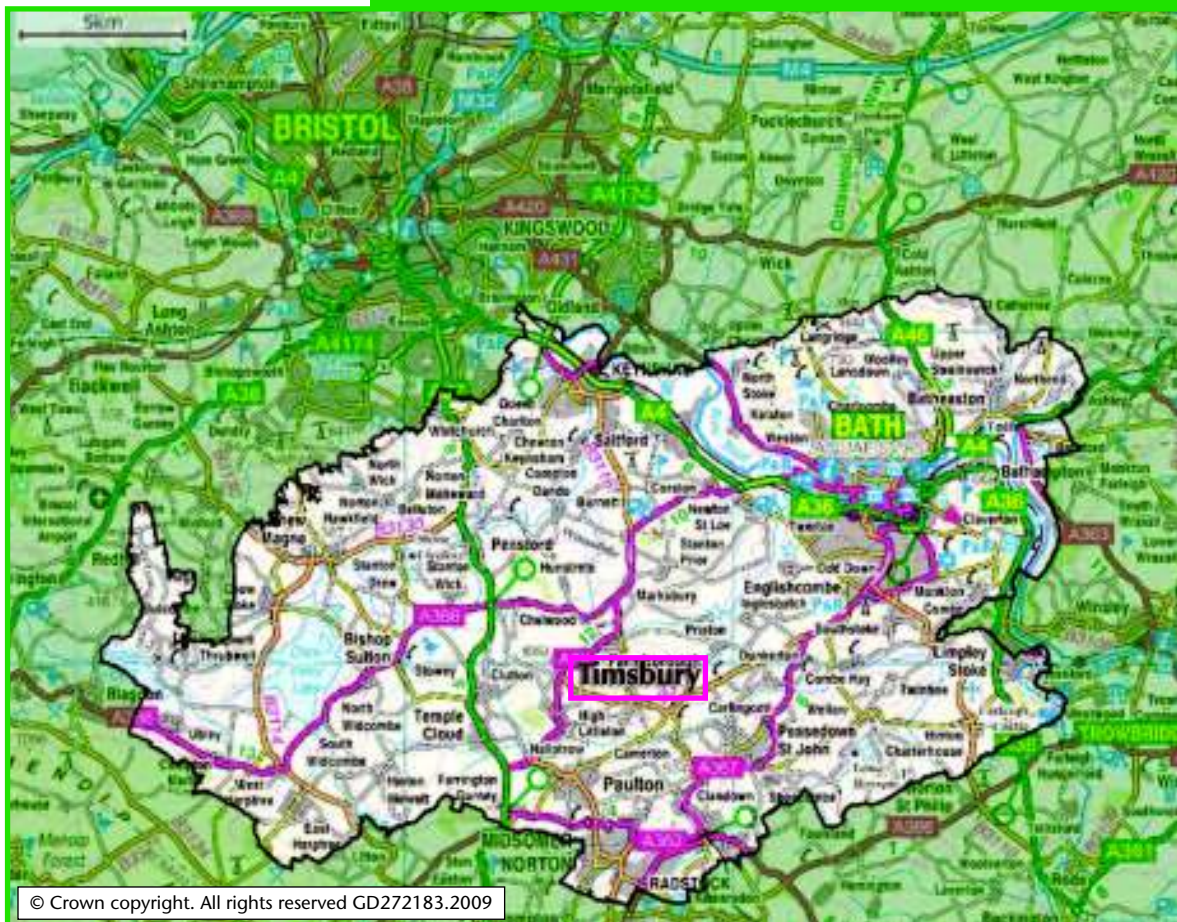
Timsbury has a large modern and well equipped village hall, the Conygre Hall, which is well used by the large number of clubs, societies and organisations which exist in the village and for many occasional events. Adjacent to the Conygre Hall is a recreation field which is used by several local sports clubs. Bath YMCA own a building in the village with a hall, rooms and kitchen which is used by the Youth Club and also hired out to small groups. The local Royal British Legion own a building for their own use and for hire.

Communication with residents is facilitated by The Timsbury Letter, published monthly by the Parish Council and distributed to all households in the parish.

This journal has been in existence since 1978 giving the Parish Council, local churches, clubs, societies, businesses and individuals the opportunity to publicise their activities and views. A website for the village has been in operation since 2001. In 2009 the current website [www.timsbury.net](http://www.timsbury.net) attracted between 20 and 50 "hits" per day.



Map showing location of Timsbury in Bath & North East Somerset



# Context of the Report



## Context: The background and process of construction of the plan

Following a government initiative, promulgated through the Community Action arm of DEFRA, the Parish Council advertised in the Timsbury Letter for volunteers to collect the views of the residents on the development of the village over the next ten years, analyse them and publish the results in a Village Plan.

The volunteers formed an independent Steering Committee of eight, including two Parish Councillors. Our District Councillor is an ex-officio member.

The Steering Committee first met in June 2007 when it became clear that the members possessed sufficient skills and interests to oversee the process. All agreed that this would entail using different strategies to include those people who did not already belong to organisations, churches, clubs, or attend the village school or youth club.

Four members of the Committee attended training sessions organised by Community Action in order to gain more understanding of the various aspects of the project. At the July 2007 meeting officers were elected.

The views of residents were collected by means of meetings and questionnaires, and considerable help was given by officers of B&NES Council in facilitating our use of their computer and software to record and analyse the questionnaires.

It was recognised as important to keep our M.P., District Councillor and Parish Councillors informed. Progress reports have appeared regularly in the Timsbury Newsletter.

Timsbury Parish Council has been very supportive in funding costs for photocopying and stationery, as well as paying for room hire for meetings at The Conygre Hall.

## Methods of Consultation

*A Village 'Have Your Say' Day was held in October 2007. Over 140 people attended and 29 additional volunteers were obtained for future Working Groups and other tasks. Three Working Groups were formed to produce questionnaires and later a final Report and Action plan for each of their areas, based on analysis from data entered onto B&NES Council computer systems.*

*Data was compiled from two questionnaires, one designed for every adult in the village, both residents and employees of local businesses, the other designed for young people aged 12-18. The adult questionnaire was divided into sections for Public Services, Roads & Transport, Village Life and Environmental issues. Both questionnaires were put online for completion on the internet through the village web-site. The views of the 5-11 age group were obtained through the cooperation of the Head-teacher and staff of St. Mary's C of E Primary school who undertook a relevant project and appointed representatives from the pupils to pass the results back to members of the Steering Committee.*

*Copies of the questionnaire were printed, and volunteers delivered and called back to collect them from every resident in the parish. Further volunteers undertook the time-consuming task of data entry from over 1,000 paper questionnaires to the computer for analysis.*

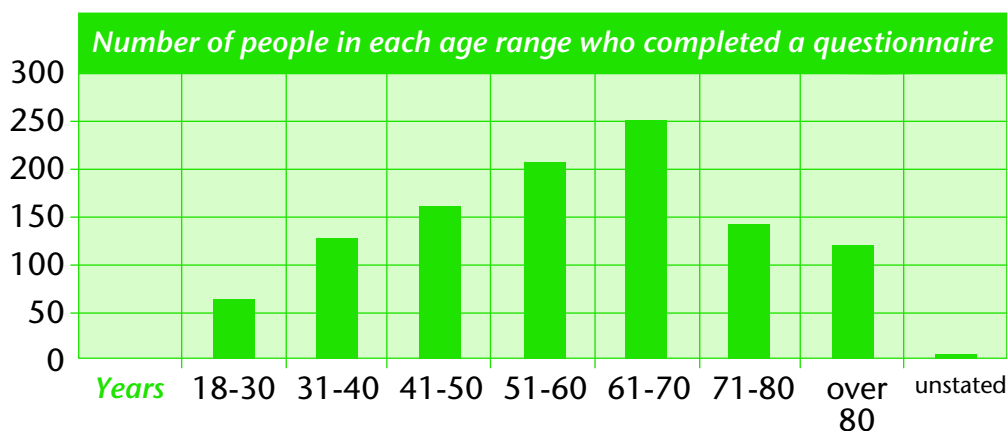
*Key elements in the success of this venture were:*

- The efforts of more than 70 volunteers who donated over 2,000 hours of their time*
- The willingness of volunteers to distribute questionnaires to every property and then call back to collect them.*
- The staff of the village Post Office, where residents had an option to leave completed questionnaires.*
- The cooperation of so many residents in giving their time and consideration in completing the questionnaire.*

# Validity of Responses

2,060 adult questionnaires were distributed,  
1,074 completed and returned (1,057 manually and 17 on-line)  
**giving a response rate of 52%**

## Age profile of respondents



## Comparison of rate of response from residents in different age groups

Age Group	Approx. number of residents based on 2001 census + 7 years, less old age adjustment	Number of forms completed	Percentage of resident age group
18-30	292	64	22%
31-40	248	128	52%*
41-50	352	161	46%*
51-60	381	206	54%*
61-70	376	251	67%
71-80	268	141	53%*
over 80	161	119	74%
Age unstated		4	
<b>TOTAL</b>	<b>2078</b>	<b>1074</b>	<b>52%*</b>

\*It can be seen from these figures that the percentage of responses from the 31-60 and 71-80 age groups coincide very closely with the overall percentage of questionnaires returned. It should be noted however that the 18-30 age group is under-represented, and the 61-70 and over 80 groups over-represented.

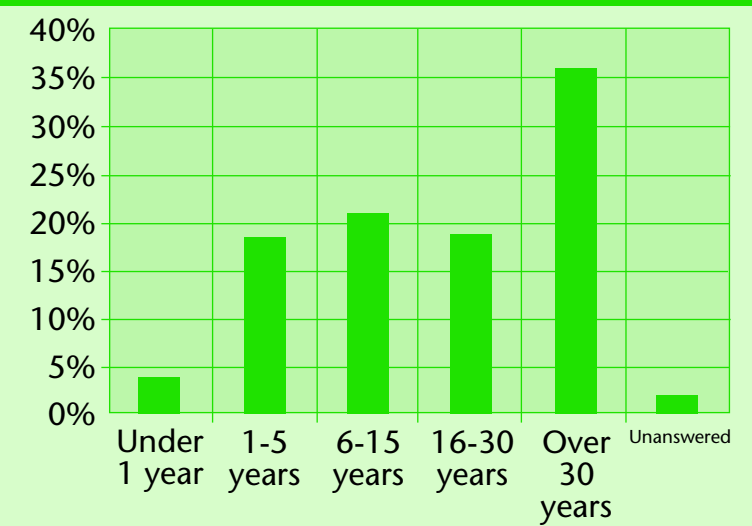
*Because of the very high response rate to the questionnaire and the distribution of age range of respondents, it is fair to conclude that the views expressed in the survey are a good representation of the views of the people of Timsbury.*



### *Length of residency in Timsbury*

Over 75% of the respondents have lived in the village for over 5 years, including 35% who have been resident for over 30 years. Just 4% have moved into the village during the previous year. This reflects a very stable population.

*Number living in Timsbury for stated period expressed as a percentage of returned questionnaires*





# Safer Communities

## Policing

The level of crime in the community appears to be relatively low. About 90% of the respondents had neither experienced criminal activity nor reported any in the previous 12 months. About 400 adults who were not members of a Neighbourhood Watch scheme were interested in joining one. About 75% of the respondents felt it was safe to walk about the village at night; those who did not cited "fear of what might happen" and "fear of self injury by stumbling caused through infirmity" as their main reasons. The further comments made illustrated that the atmosphere generated by the steady stream of reporting of crime by the national newspaper and television channels without a similar reporting of beneficial things that were happening, was causing far more fear than that generated by crime itself.



The non-emergency police contact number was known by just half the respondents and nearly two-thirds knew where to find the visiting times of the Police Community Support Vehicle; the lack of effectiveness of this means of liaison between police and community was illustrated by only 4% making use of it. In contrast over 90% welcomed and supported Police Community Support Officers (PCSOs). Suggestions for improving their effectiveness still further included them visiting local social gatherings of people such as coffee mornings and clubs and societies, where in a short time contact and communication could be established with 30 or 40 people. Building relationships when there are few problems pays enormous dividends when a problem does arise.

The Police Community Support Vehicle may have a role in establishing a presence in areas of higher criminal activity, or at mass events like Festivals and Village Fairs, but in our view is not cost effective as a means of communication in Timsbury. Personal exchanges between PCSOs and the public is recognised as effective by 90% of the respondents.

## Car Ownership

Over 75% of the respondents are recorded as registered owners of motor vehicles, with 18% owning more than one. This averages out as one vehicle for every adult in the village, with over 15% regularly parked on the road. In addition, 8% regularly park company vehicles at home, with over 35% of these being regularly parked on the road.

## Parking

The population was equally divided in the issue of marked "Parking" or "Keep clear" spaces. The main problem areas were identified as North Road, South Road/Church Hill area and generally bad parking in turning areas, narrow roads and near junctions. 289 suggestions were received.



# Safer Communities

## Level of Traffic

Over 66% stated that the level was high or too high, with only 18% regarding it as acceptable. 80% (over 800 people) supported a speed limit of 20 mph on roads in the village. Similarly 85% supported a weight limit to reduce the number of large lorries travelling through Timsbury.

## State of Roads and Pavements

Just over half the respondents assessed these to be good or satisfactory, and just under half stated that they were poor or very poor. These replies depended significantly on where the respondents lived. Specific locations needing improvement were identified, including North Road, South Road, The Avenue, High Street, The Square, Newman's Lane and Bloomfield Road area. The pavements in the older part of the village came in for criticism because of their camber, unevenness and narrowness, making them almost impossible to use by people with pushchairs or in wheelchairs.

## Junctions

The majority supported changes such as mini-roundabouts or other devices to improve road safety at the junctions of Hayeswood Road/The Avenue and North Road/South Road. The majority were against changes at the junction of Greenvale/South Road.



## Pedestrian Crossing Places

86% were in favour of pedestrian crossing places on main roads being clearly identified to pedestrians and drivers. There was less than 30% support for marked cycle routes in the village.

## Street Lighting

80% felt that this was adequate. Others felt that there were problems in The Avenue (now rectified), the Lippiatt Lane/Sunnyside Gardens area (now improved) and South Road.

## Public Transport

Public transport was used by 35% of the respondents, with the proportion of respondents aged over 60 using it being twice that of those aged 60 and under. Slightly less than half of respondents stated it to be good or sufficient, with the remainder stating it to be poor or very poor. The main causes of grievance were the unpunctuality, the times of services, the high fare prices and the lack of routes to sufficient destinations, in particular the absence of a direct service to Bristol.

## Community Car Service

There was very little need for this type of provision for the majority (85%), but a significant number (70 adults) said they would use it if provided.

## Public Footpaths

The community is well served with footpaths and no major issues arose.



# Stronger Communities

## Volunteering

An enormous amount of voluntary work is carried out in the parish with over thirty voluntary clubs and societies meeting on a regular basis. Over 70 volunteers helped with the village survey and compilation of this Village Report and Action Plan.

## Village Day

Strong support of 49% of respondents was received for a Village Day, with a further 40% saying that they would possibly support it. 120 offers of help were received. The date of 19th June 2010 has been selected for this celebration and a Village Day Committee, chaired by Peter Buchanan, has already been set up and is progressing well.

## Communication

"The Timsbury Letter" published monthly by the Parish Council and delivered to every property in the parish was shown to be a very effective means of communication with 93% of the respondents using it as a source of information. Many (64%) said they received information by word of mouth. The Somerset Guardian was the most widely read local newspaper with 43% readership, and was followed by the Radstock Journal at 27%. B&NES Council News was only read by a quarter of the respondents and the Bath Chronicle by 14%. Only 7% use the village web-site. However, this has recently been upgraded and enhanced in anticipation of an increase in its use as a means of giving and receiving information.

## Village Hall

The Conygre Hall with its excellent facilities, adjacent recreation field and good off-road parking area form an important centre for many village activities for all age groups. It is managed and maintained by the trustees of an independent charity, the Conygre Trust, who pursue a policy of continuous improvement.



## Post Office

This is greatly valued by the community with over 85% using it at least once a month and over 19% using it at least twice a week. Only 2% felt that it was not important. One-third of respondents use the Post Office for accessing Banking Services, which is a vital service as it is over 6 miles to the nearest bank.

## Pharmacy and Surgery

*Please see the entries on page 14 under "Healthier and Older Communities".*



# Stronger Communities

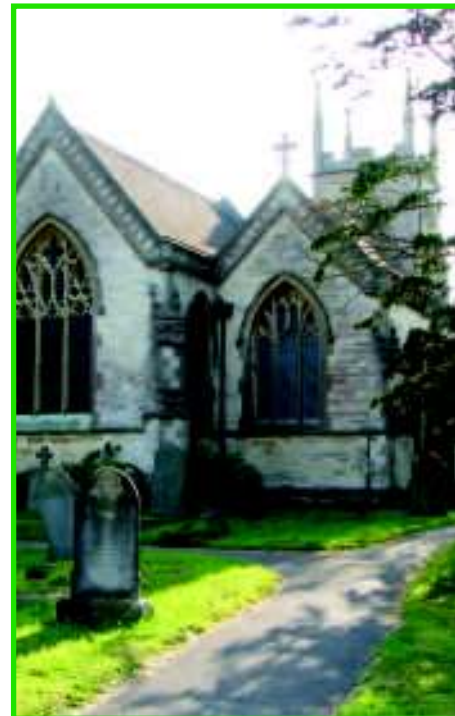
## Shops

The village shops are used by 97% of the respondents for some items, with 13% using them for most of their weekly shopping. It is significant that 8% also liked to shop on-line. 57% liked to shop in Farm Shops and there was also significant support for Farmers' Markets (23%) and buying direct from farmers.

## Churches

The parish has four active churches, each with its own building, meeting the spiritual needs of individuals and the community. They provide baptism, wedding, bereavement and funeral support and services as well as a variety of other activities. Relations between the churches are good with an active Timsbury Churches Together committee which organises four united services a year, two of which are held in the village hall. Topical subjects are discussed with knowledgeable speakers at Open Forum meetings in the village hall twice a year, and informal coffee mornings provide social meeting places.

Over 200 comments and suggestions were received which have been passed to the churches for information and action. Their responses are given below:



## RESPONSES FROM THE CHURCHES

### **a) Provision for toddlers/children/young people**

There are groups for different ages run by one or more of the churches: (Girls Brigade(5-18), Sparklers (0-4), Kidzone(4+), S Club (4-9), SNAP (9-13) and TTT (13+) as well as occasional Messy Mornings and a new Sunday Café set up for young families. It was felt that more publicity for these groups and activities is required and the possibility of a Churches newsletter is being considered.

The churches have also worked hard to help ensure the continuing operation of the Youth Club when it was threatened with closure, raising substantial funds to help this work. Grants have recently been obtained by the Anglicans and the Methodists totalling £6,000 per year for each of the next three years to fund the salary of a Youth Worker in the Youth Club. Efforts are now being made to recruit a suitable person.

### **b) Churches open more**

Security is an obvious issue but one church is open during certain days from Easter to October.

### **c) Support for those in need**

The churches provide regular weekly coffee shops and games mornings for those who want to have social interaction with others. There is also an occasional drop-in for young mums. One of the churches has trained a team of pastoral visitors prepared to visit anybody in need. Again publicity may need to be improved so that people and carers know that this is available.

### **d) Social events**

There are numerous social events held by the churches; concerts, fetes, coffee mornings, games etc. Whilst these may be offered on church premises, they are open to all. Again publicity may need to be improved.

The churches are anxious to do what they can to make this village an even better place to live and to meet the needs of those who live here. They are keen to extend this work as resources become available and opportunities arise. Help from other people in the village is always appreciated.

# Stronger Communities

## Parish Precept

Almost half (48%) of the respondents were in favour of increasing the Parish Precept to fund more Timsbury projects and activities. However a third (34%) held the opposite view. Many suggestions for projects were itemised.

## Village Cemetery

A place of burial in the village is valued. As the present site is almost full the need to find a suitable additional site was regarded as important by 60% of the respondents.

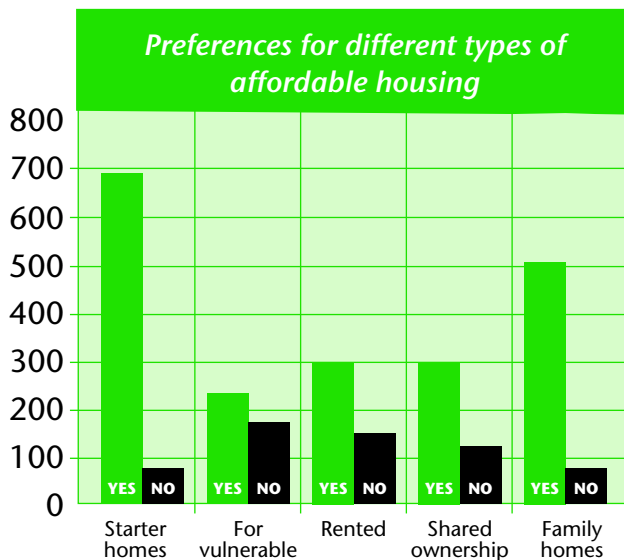


## Allotments

The majority did not wish to rent an allotment, but 85 individuals replied that they would like to. These respondents should now identify themselves by writing to the Allotment Management Committee or the Parish Clerk whose address is in the Timsbury Letter.

## Housing

The priorities for future housing were headed by the need for "starter homes" followed by "family homes". These were followed by the need for rented accommodation and shared ownership housing. Lower on the priority list was accommodation for vulnerable people.



Opinions as to whether there was enough land in the Parish for future housing needs varied greatly with almost half not expressing any opinion; of the remainder just over a quarter of respondents felt there was not enough, whilst just under a quarter thought there was.



## Green Belt Land

Only 8% were in favour of building on Green Belt land to meet housing needs; a further 21% could be persuaded, but 63% were opposed to any building in the current Green Belt area.

# Healthier and Older Communities

## Surgery

Timsbury has a modern doctors' surgery which serves the local community and the surrounding villages, and at which 80% of the respondents are registered. Many of those not registered maintain their link with surgeries in the areas from which they came, but many of these expressed the view that they would probably change as they got older. Overall, 90% of respondents felt that it was essential to maintain a surgery in Timsbury.

Difficulties with travelling to this surgery through lack of transport or escort are experienced by 3% of respondents. However, over 20% said they would have difficulty travelling to medical facilities outside the village.

Approximately 20% of respondents had made use of the out-of-hours emergency service, with the vast majority expressing satisfaction, but a significant minority have the opposite view. Paulton hospital, located about 4 miles from Timsbury, had been used by 70% of respondents in the last 5 years with a 97% satisfaction rate.



## Pharmacy

The village pharmacy sited next to the Post Office is well used by over 80% of respondents each month with 7% visiting more than once every week. Respondents had the almost unanimous view that the pharmacy is either essential (86%) or desirable (a further 13%).



## Older Residents

The village population has 39% over the age of 60, and consequently many social activities have been established by and for this group. The main omission that became apparent was for a designated daily meeting place, comfortably furnished, with the availability of snacks and light meals. A start had been made on this by two of the churches, each offering facilities for meeting socially for half a day each week.

## Activities

Volunteers in the village run over thirty social, sports and specialist clubs and societies. In the survey only 10% said that the range of indoor activities offered was insufficient for their needs. 74 suggestions for improvements were made and these are being followed up. If a gym were to be provided 23% said they would use it, and a further 31% said that they might.

Only 6% reported that the range of outdoor activities was insufficient for their needs, and the 47 suggestions made are being followed up. The Conygre Hall recreation field is used by 28% of residents.

26% of respondents use sports facilities outside of Timsbury and these include three swimming pools in adjacent communities, the facilities of the University of Bath, Writhlington School and sports clubs in Keynsham.



There were 212 suggestions received for additional facilities or activities that would be appreciated and these are being followed up.

# Children & Young People

## RESULT OF PRIMARY SCHOOL PROJECT

Timsbury with its green environment, attractive buildings and friendly people is appreciated by all age groups. Most children had friends locally and enjoyed using the recreation field and equipment and playing in the fields. They found the school environment to be enjoyable and the staff helpful and friendly.

The shops are liked, particularly those selling sweets and fish and chips. Sports facilities appealed to older children, especially football, cricket and tennis. Dance classes held at the Conygre Hall and uniformed organisations like Brownies and Beavers are popular.

All years expressed concern about the busy main roads, with fast moving, often bulky traffic, particularly when walking to school. Litter and dog fouling were disliked by all age groups and there was evidence of some unease between different age groups.

Ideas for improvements included more adventurous equipment in the playing field, a running track, a cycle track, a graffiti wall and more seats. A new safe footpath route to school was suggested.

Pupils knew the names of the Police Community Service Officers and obviously had a good relationship with them, indicating some good liaison work. They also knew the police emergency telephone number but not the non-emergency one.

## Provision for Education

The village has its own Primary School with just over 200 pupils. Secondary education is provided by three nearby comprehensive schools, together with small numbers going to Bath and other areas. There is a College of Further and Adult education within 5 miles and four Universities within 16 miles.

## Provision of Activities

Among the many activities for young people are junior football and cricket clubs, dance classes, Brownies, Girls' Brigade and a pre-school. Some adult groups have junior sections and the church clubs are listed on page 12. Timsbury Youth Club was in danger of closing due to a decision by B&NES Council to cut all staff funding to the club from April 2008. This prompted immediate action by the Steering Committee, details of which are given on page 17.

## Consultation with 5-11 year olds

This was carried out with the co-operation of the Headteacher and staff of St. Mary's CE Primary school, Timsbury. At the request of the Steering Committee, the school initiated a whole school project to find out what the children thought about their village. Representatives from different age groups then met with members of the Steering Committee to present and discuss their findings. As a result of this, the request for more adventurous equipment in the recreation field has been acted upon by the Conygre Trust and the equipment is being installed during December 2009.



# Children & Young People

## Responses from Adult Questionnaire

Over 85% did not feel the need for before-and-after-school care facilities, but a significant minority of 4% (47 people) said they would use them if provided.

12% said their children attended activities in the Conygre Hall and 10% said their children attended activities in other halls and sites in the village.

38% brought children to use the play area of the recreation field. Of this group half were in the 5-11 age group, with a further 42% under 5 years of age and 8% over 11 years old.



**73 Youth Questionnaires  
were returned (34%)  
of which 3 were on-line.**

## Consultation with 11-18 year olds

71% of the replies said that a meeting place for their age group was needed in the village, the YMCA hall being the preferred location, with the Conygre Hall as second choice. 80% said there were insufficient village facilities for young people. 68% were involved in leisure activities other than youth club. There were 57 suggestions for improvements that could be made, mostly involving the provision of leisure time facilities.



Only 30% knew the police non-emergency number and where to find the times and location of the Police Community vehicle. 84% said they had not witnessed any crime in the last 12 months, but 16% (12 people) said they had, some giving details ranging from the letting off of fireworks in inappropriate places (5 people) to robbery (1 person). 82% felt safe when they were outside and reasons for liking living in Timsbury included the country location, absence of crime, friendliness and its close proximity to Bath and Bristol.

A significant minority said they did not like living here because they felt there was nothing to do. The main issues identified for not liking Timsbury included the lack of appropriate bus services, and cost of those that do exist, being too quiet (boring) especially at night, lack of a good café, and busy roads.



Almost 80% felt there were sufficient shops. About half felt there was sufficient public transport through the village, those that did not specified the need for services at different times from those provided for routes into Bath, Radstock, Peasedown and Midsomer Norton, and the introduction of a service to Bristol. Most 11-16 year olds relied on being taken in their parents' car. 58% felt there were insufficient opportunities for part or full time employment in the village, but 26% felt there were.

Just over a half felt there was insufficient affordable housing in the village.



# Children & Young People

## YOUTH CLUB

It was evident from the consultation at the village "Have-your-say-day" and from responses to the questionnaire that many people supported continuation of the provision made for young people in the village. The news of the imminent closure of the Youth Club due to the decision of the local authority to cease all staff funding from April 2008 was moving the village in the opposite direction. Therefore urgent action was required to prevent this from happening.

## Responses from Adult Questionnaire regarding the Future of the Youth Club

Three quarters of respondents thought that the village youth club should be retained and only 1% were against. Views on the way that future funding should be obtained showed almost equal support for the three options given, with very little objection to any. It is therefore concluded that the preferred way forward is a mix of financial support from the three sources:

- Youth Club members self-help and sponsors
- The Parish precept managed by the Parish Council
- Public donations and grants.

## ACTION TAKEN

An immediate appeal for local funds was launched, and local churches, organisations, individuals and the Parish Council reacted supportively and together with a grant from Quartet raised £10,000 in a short period of time.

Simultaneously, discussions were opened involving the Head of B&NES Children's Services, the District Councillor for Timsbury and the Steering Group chairman. The combined effect of the village being willing and capable of contributing to a solution and the activity of the Timsbury councillor persuaded the local authority to amend the implementation of their previous decision. It was agreed that instead of the immediate 100% cut there would be a 50% cut for the first year; a further cut the second year to finance the lead Youth Worker only and no funding for staffing from the third year. This gave the village time to find alternative ways of maintaining a youth club. Further negotiations with Bath YMCA resulted in them acquiring the building for development for youth work and other community use. The offer of voluntary help from people willing to be trained would clearly lessen the ongoing financial pressures.



# Economic Development & Enterprise

## Businesses

In addition to a primary school, post office, pharmacy and surgery, the village has two food, stationery and newspaper shops, two hairdressers, a service garage, a fish and chip shop, an upholsterer, and two public houses, one of which serves food.

Other businesses include electricians, painters, decorators and other trades. These operate from private premises, often as sole traders, but some employing one or two additional staff.

The nearby Timsbury Industrial Workshops complex provides accommodation for approximately 30 small business units. There are spaces currently available.

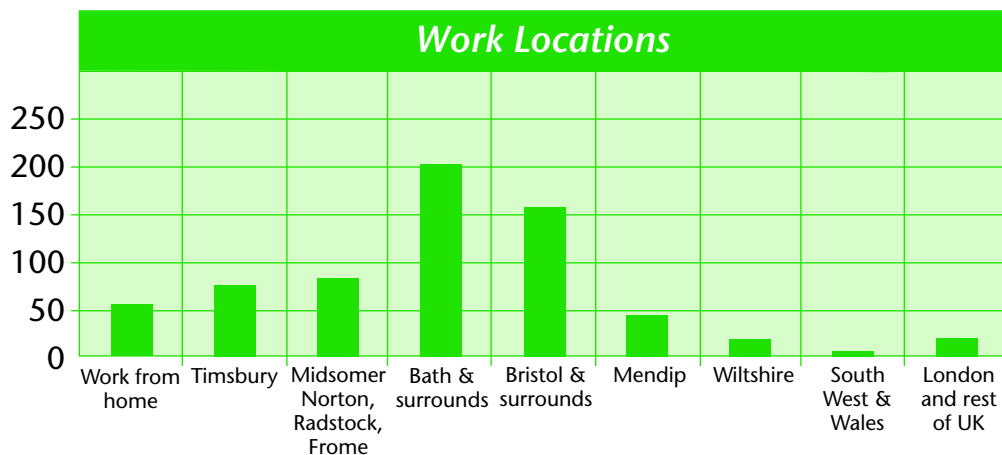
## Employment

A great variation in location of places of employment was indicated with 8% working from home, 24% in the Timsbury, Midsomer Norton, Radstock and Frome area, 24% in Bristol, 31% in Bath, 9% in other locations in Mendip and Wiltshire and 4% in Wales, the South West, London or further afield.



## Means of Travel to Work

Only 5% used public transport with 82% using their own car, a car-share arrangement or a company vehicle. The remainder walked, cycled or used a motor cycle.



## Opportunities

A number of people identified a desire for a coffee shop providing light meals and snacks to serve as a meeting place during the day and evenings.

## Concerns

No major concerns were expressed during the course of the survey. The balance between those offering and those seeking employment appears to be healthy.

# Environmental Sustainability & Climate Change



The evidence presented below indicates potential serious problems in sustainability of village life in the event of major disruption of the national networks.

## Energy

Most energy supplies are taken from the national networks with 64% of the population having no alternative if these supplies were disrupted. However it is encouraging to note that over a quarter of the respondents did have an alternative source of heating available.

70% were willing to consider installation of renewable energy sources; the main problem being the expense of the initial set-up charges. Similarly 70% felt that all new properties should be built to the highest possible energy efficiency standards. These may well be higher than the minimum standards specified by building regulations.

The majority felt that energy could be saved by switching off alternate street lights after midnight, with 57% for and 27% against. One third of the population felt that more effort should be made in achieving energy reductions in other ways and 130 comments were made. There is clearly a need and a willingness to take this further.

## Food

Food arrives at local shops and nearby superstores on a daily “just-in-time” basis, much of it travelling large distances from source. The responses reported in the Stronger Communities section illustrate the dependency of most of the population on continuity of supply from distant sources.



## Recycling

There is strong support for recycling by 75% of respondents, and most expressed the need for facilities to recycle all types of plastic. B&NES has now made significant progress towards this goal. The majority also felt that more local sites for the collection of waste were needed.

## Conclusion

Much needs to be done to strengthen resilience to sudden or rapid changes in the environment and national distribution networks. Therefore it is proposed that a village committee should be established to investigate the effect of these changes on the village and recommend measures to secure a more sustainable and resilient life style for the community.

# ACTION PLAN FOR TIMSBURY

The following table highlights many of the actions identified as important from replies to the questionnaires. It is not exhaustive and others may emerge as time passes. Only a few are short-term; many will require to be persistently pursued and acted upon as opportunities arise.

It is recommended that the position is reviewed annually.

## 1. SAFER COMMUNITIES

Reference	Area	Aim	Action	Responsible Authority	Local lead
1.1	Policing	To increase contact between PCSOs and residents	Liaise with police regarding methodology	Avon and Somerset Constabulary	Parish Council and local clubs
1.2	Policing	Increase knowledge of non-emergency contact arrangements.	Liaise with local PCSOs	Avon & Somerset Constabulary	Parish Council via Timsbury Letter
1.3	Policing	Facilitate creation of further Neighbourhood Watch areas where requested	Liaise with Neighbourhood Watch organising officer	Avon & Somerset Constabulary	PCSO's
1.4	Parking	To avoid problems caused by inconsiderate parking	Liaise with B&NES, and police	Individual vehicle drivers	Parish Council and individual residents
1.5	Traffic flow	To have 20mph speed limit and weight limit on main roads through village	Liaise with B&NES, and police	B&NES Highways	Parish Council and District Councillor
1.6	State of roads and pavements	Improve those identified as poor in the data analysis	Liaise with B&NES	B&NES Highways	Parish Council and District Councillor
1.7	Junctions	Improve those identified as poor in the data analysis	Liaise with B&NES	B&NES Highways	Parish Council and District Councillor
1.8	North Road	Investigate the feasibility of raised sections to identify pedestrian crossing places and slow down the traffic	Liaise with B&NES	B&NES Highways	Parish Council and District Councillor
1.9	Street Lighting	Improve those areas identified as poor in the data analysis	DEALT WITH, but further problems with particular lights should be reported to the Parish Clerk.		Parish Clerk

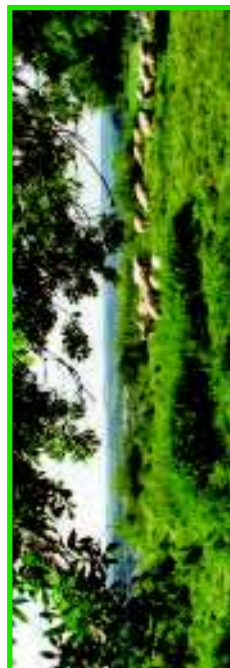
## 2. STRONGER COMMUNITIES

Reference	Area	Aim	Action	Responsible Authority	Local lead
2.1	Village Cemetery	Identify land for this purpose	Liaise with B&NES	B&NES	Parish Council and District Councillor
2.2	Parish precept	Identify viable projects which meet the needs and desires of residents	Individuals to refer to Parish Council or District Councillor	Parish Council	Parish Council and individual residents
2.3	Allotments	Satisfy need for allotments	Those interested should apply to the Allotment Management Committee	Parish Council	Allotment Management Committee (see Timsbury Letter)
2.4	Housing	Take note of views expressed in questionnaires when considering planning applications	Take note of views expressed in questionnaires when considering	B&NES	Parish Council
2.5	Green Belt and green field areas	Take note of views expressed in questionnaires when considering planning applications	Take note of views expressed in questionnaires when considering	B&NES	Parish Council
2.6	Surgery, Pharmacy & Post Office	Ensure their future as viable businesses	Continue to support them and inform relevant bodies of that support as appropriate	Owners and relevant national bodies	Individual residents and Parish Council

## 3. HEALTHIER AND OLDER COMMUNITIES

3.1	Outdoor activities	Improve knowledge of existing activities and encourage new ones	Refer to Conygre Trust and Parish Council. Use the Timsbury Letter	Individuals, B&NES	Parish Council, the Conygre Trust and individual clubs
3.2	Village Fun Day	To hold a Village Fun Day on 19th June 2010	Establish organising committee - ACHIEVED	Fun Day Committee	Fun Day Committee (see Timsbury Letter)
3.3	Facilities for older residents	A social area with refreshments for residents to meet and chat	Liaise with churches and other relevant agencies	None yet identified	Timsbury Churches Together

**Continued overleaf . . .**



## 4. YOUNG PEOPLE

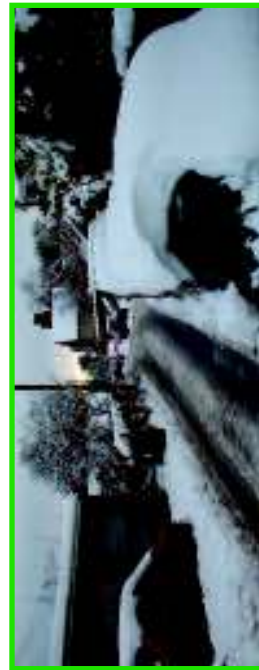
Reference	Area	Aim	Action	Responsible Authority	Local lead
4.1	Youth Club	To establish a short term future for Timsbury Youth Club	Village appeal to national bodies and local residents - ACHIEVED	Youth Club Management Committee	District Councillor and local residents
4.2	Youth Club	To establish a medium to long term future for Timsbury Youth Club	Secure funding and staffing	Bath Y.M.C.A.	None yet identified
4.3	Provision of more activities for young people	To increase the facilities available to young people	Encourage adult groups to develop junior sections and support new ventures	Bath Y.M.C.A., individuals and local groups	Local groups, individuals and the Conygre Trust
4.4	Access to facilities outside Timsbury	Improve access to facilities outside the village	Explore the possibilities	Bath Y.M.C.A. and transport providers	Youth Club Support Group and others

## 5. ECONOMIC DEVELOPMENT AND ENTERPRISE

5.1	Coffee shop and meeting place	Consider possibility of providing a permanent facility	Liaise with possible providers	None identified	None identified
5.2	Existing shops & businesses	Encourage the continuance and sustainability of local businesses	Support them	Individual owners	Individual residents and Parish Council
5.3	Public Transport	Provide new services to Radstock, Midsomer Norton and Bristol	Liaise with providers	None identified	Non identified

## 6. ENVIRONMENTAL SUSTAINABILITY & CLIMATE CHANGE

6.1	Food, Energy & Recycling	To investigate possible improvements to the present situation	Set up a specialist committee – ACHIEVED	None identified	Parish Council and new committee
-----	--------------------------	---	--	-----------------	----------------------------------





# *The Essence of Timsbury and a Vision for the future . . .*

Timsbury is a pleasant, quiet village surrounded by accessible countryside and inhabited by very friendly people with a real sense of community.

- It has its own churches and pubs, primary school, garage, village hall and recreation ground.
- There are good facilities for local shopping, medical care and post office services.
- These facilities are supplemented by those in larger villages, towns and the cities of Bath & Bristol. These are regularly used by Timsbury residents.
- Many varied sports clubs and other clubs and organisations thrive.

The survey showed a strong desire and determination to maintain the current ethos of the village.

- This will require an examination of existing structures and organisations for resilience against sudden changes and developing sustainable provision of resources.

The greatest strength of the village is its people.

- Most expect to be consulted about changes which will affect them and the village.
- Many are willing to work on a voluntary basis to maintain and develop facilities and opportunities for the benefit of the local community.





# Comments from the Questionnaires

*"I like the people, the facilities and the village feeling that would be spoilt if the village becomes any larger".*

*"The shops are just right and there is an atmosphere of community spirit which should be nurtured".*

*"Safe environment for children to play and excellent school".*

*"Surgery a must for elderly and those needing care".*

*"Good community spirit greatly helped by Churches Together and activities at Conygre Hall".*

*"It would be good to have something like a monthly Farmers' Market, including the facility for locals to sell/swap produce".*

*"Presence of police at different times each day would be a deterrent to vandalism".*



*"It would be good if North Road were less congested, but cannot think how to solve the problem".*

*"Many activities in the village give a large social circle which is enjoyable. Future of organisations will, however, require younger people to join".*

*"I feel very fortunate to live here and hope to stay here for the rest of my life".*

*"There is a real sense of community in the village and people with time and a willingness to make a difference".*